

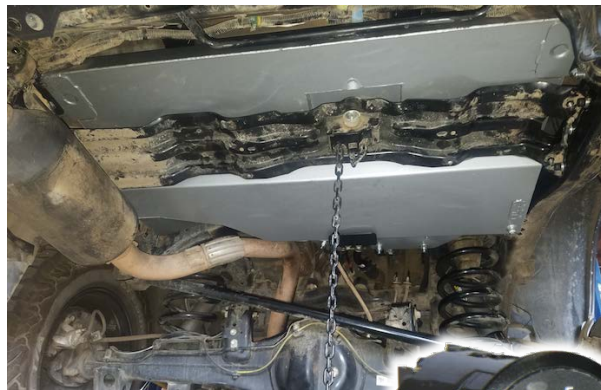


## Toyota Land Cruiser URJ200 & Lexus LX 570 Auxiliary Fuel Tank All Years 12.5 gallons

Direct-fit extended range fuel tank to serve expedition, long-distance travel and hauling needs. Buy fuel when the price is right and be prepared for the long haul.

Built by specialists with three decades of experience, serving customers around the world.

Part Number	TLC200SAUS
Type	Auxiliary
Capacity - Gallons	12.5
Fill Point	Dual
Fuel	Petrol
Location	Behind Axle
Relocate Spare	No
Exhaust	Standard
Price	\$1,795
Note	LX Fitment Not Confirmed



Based in Melbourne, Australia, Long Range Automotive uses the latest 3D modeling software to design and build over 200 different tank models. Precision CAD 3D models and drawings are produced for all tanks. LRA uses a Hypertherm CNC plasma profile cutting system with True Hole technology to ensure accuracy. All welds are full penetration corner to corner MIG welded, using a high quality inert shielding gas and level layer wound MIG wire to ensure good welding penetration and exclusion of porosity in the weld. Tanks are fully internally baffled and an expansion chamber is incorporated in the design of the tank.

All tanks are pressure tested and checked by two separate quality control procedures. Every kit includes brass threaded hose barb fittings, stainless steel hose clamps and high tensile bolts with Nyloc nuts.



Proudly imported and distributed by **Cruiser Brothers, LLC**  
1038 West Fremont Street, Stockton, California 95203  
CruiserBrothers.com  
**1-800-224-7801**

**Call us today!**



## Toyota Land Cruiser URJ200 & Lexus LX 570 Auxiliary Fuel Tank All Years 12.5 gallons

*Note: 40 gallon tank shown below to show placement.*



*Note: Detail from top of 12.5 gallon tank showing cut-out for charcoal canister. Same on 40 and 24 gallon tanks for 200 Series.*



### Parts that Get You Home

**Cruiser Brothers, LLC** is proud to support a range of Australian manufacturers as importers and distributors of unique and proven solutions for offroad travel, towing and extreme conditions. Since 2015, we have partnered with leading brands that include **Terrain Tamer**, **Harrop Engineering**, **Long Range Automotive**, **Wholesale Automatic Transmissions** and **FlashLube**. Visit or call us at:

[CruiserBrothers.com](http://CruiserBrothers.com) or **1-800-224-7801**



## A tank and a team you can trust

- **Additional product information:**
  - Works with OEM emission systems
  - Kit includes all fittings and parts, with instructions Uses OEM fill point with a provided dual-fill tube to service both tanks individually
  - A combination fuel gauge/transfer pump control module is included.
  - Constructed of 2 mm T125C aluminized steel.
  - More about aluminized steel [https://en.wikipedia.org/wiki/Aluminized\\_steel](https://en.wikipedia.org/wiki/Aluminized_steel)
- **Shipping information:**
  - Tanks ship from Stockton, California by motor freight, wrapped and strapped to a standard pallet
  - Single tank shipping varies from \$150 to \$300 within Continental US - added charges may apply for residential deliveries and deliveries requiring lift gate for offloading pallet
- **Important disclosures:**
  - This product is designed to suit vehicles as delivered when new. Modifications such as suspension, skid plates, bumpers and other aftermarket additions may impact or prevent installation.
  - This product is NOT FOR SALE TO CALIFORNIA RESIDENTS
  - This product has not been approved, certified, rated or otherwise passed upon by any federal or state regulatory agency, nor has it been tested or approved by any testing or certification body
  - Neither Long Range Automotive or Cruiser Brothers, LLC have any control over the installation or use of this product. Cruiser Brothers, LLC highly recommends that certified professionals install this products described herein.
  - Buyers must rely upon their own skill and judgment in evaluating the installation of this product and are solely responsible for the product's use

See our tank video on YouTube –  
<https://www.youtube.com/watch?v=3dx19C6OxEA>



## Parts that Get You Home

Cruiser Brothers, LLC is proud to support a range of Australian manufacturers as importers and distributors of unique and proven solutions for offroad travel, towing and extreme conditions. Since 2015, we have partnered with leading brands that include **Terrain Tamer**, **Harrop Engineering**, **Long Range Automotive**, **Wholesale Automatic Transmissions** and **FlashLube**. Visit or call us at:

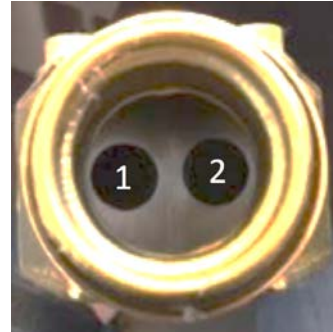
[CruiserBrothers.com](http://CruiserBrothers.com) or **1-800-224-7801**



## Auxiliary Tank Combination Switch / Gauge

### Adding fuel:

- With most of our kits, you fill both of your tanks through the same fuel door. Certain auxiliary kits do not allow this feature due to location of the tank and/or configuration of the filler tube. Those kits (Toyota Land Cruiser 4X and some 7X Series, plus some Land Rover kits, etc.) require a second, separate fill point be added on the body panel or in the wheel well or elsewhere.
- For single point kits, here are several fill inlet configurations used.
- **#1 DUAL FILL** - Insert the fuel nozzle into left inlet #1 (main tank) or right inlet #2 (aux tank). Typically seen in 200 Series Land Cruiser and FJ Cruiser kits, as examples.



- **#2 FLAPPER** – Use the knob to divert fuel flow into the auxiliary tank. Typically seen in 200 Series Land Cruiser kits, using new, OEM Toyota components.



- **#3 SPLIT FILL** – Single fill point with no diversion – fuel flows into both tanks until both are full (not shown). Found in our GX 470 and later 4Runner kits.

### Fuel transfer:

- To move fuel from aux tank to main tank, press the button
- During operation, you will hear the pump operating (kind of a “tic-toc” sound) and that is normal
- The pump will shut itself off as below
- The pump and transfer line directs fuel into the fill tube downstream from the fuel filler
- If you somehow happen to overfill the main tank, it will simply drain back down to the auxiliary tank





## Auxiliary Tank Combination Switch / Gauge

The LRA-PG210 Switch/Gauge unit fuel display functions as follows:

1. The RED and GREEN lights display the contents of the auxiliary tank.
2. All **GREEN** shows FULL



3. **RED** Flashing Light showing EMPTY



4. When the switch is turned **ON** and the **ORANGE** light is displayed this indicates that fuel is being transferred from the auxiliary tanks into the main tank.



5. Fuel is transferred at around **2 liters per minute**.
6. Fuel will be transferred from the auxiliary tank into the main tank until the auxiliary gauge shows a **RED** flashing light at which point the pump will continue to run for 2 minutes and then **the buzzer will sound and the pump will automatically shut off.**
7. You can restart the pump by simply pushing the switch button again, the pump will run again for another 2 minutes before automatically shutting off.
8. **OPTIONAL:** It is also possible to connect the switch to the OEM fuel gauge to shut the transfer pump off when the OEM tank is full. Please consult a qualified auto electrical shop.

**DO NOT OPERATE TRANSFER PUMP WITHOUT FUEL IN AUXILIARY TANK -  
Pump failure may result otherwise**

**DO NOT OVERFILL OR TOP OFF –  
This practice can damage your emission system**